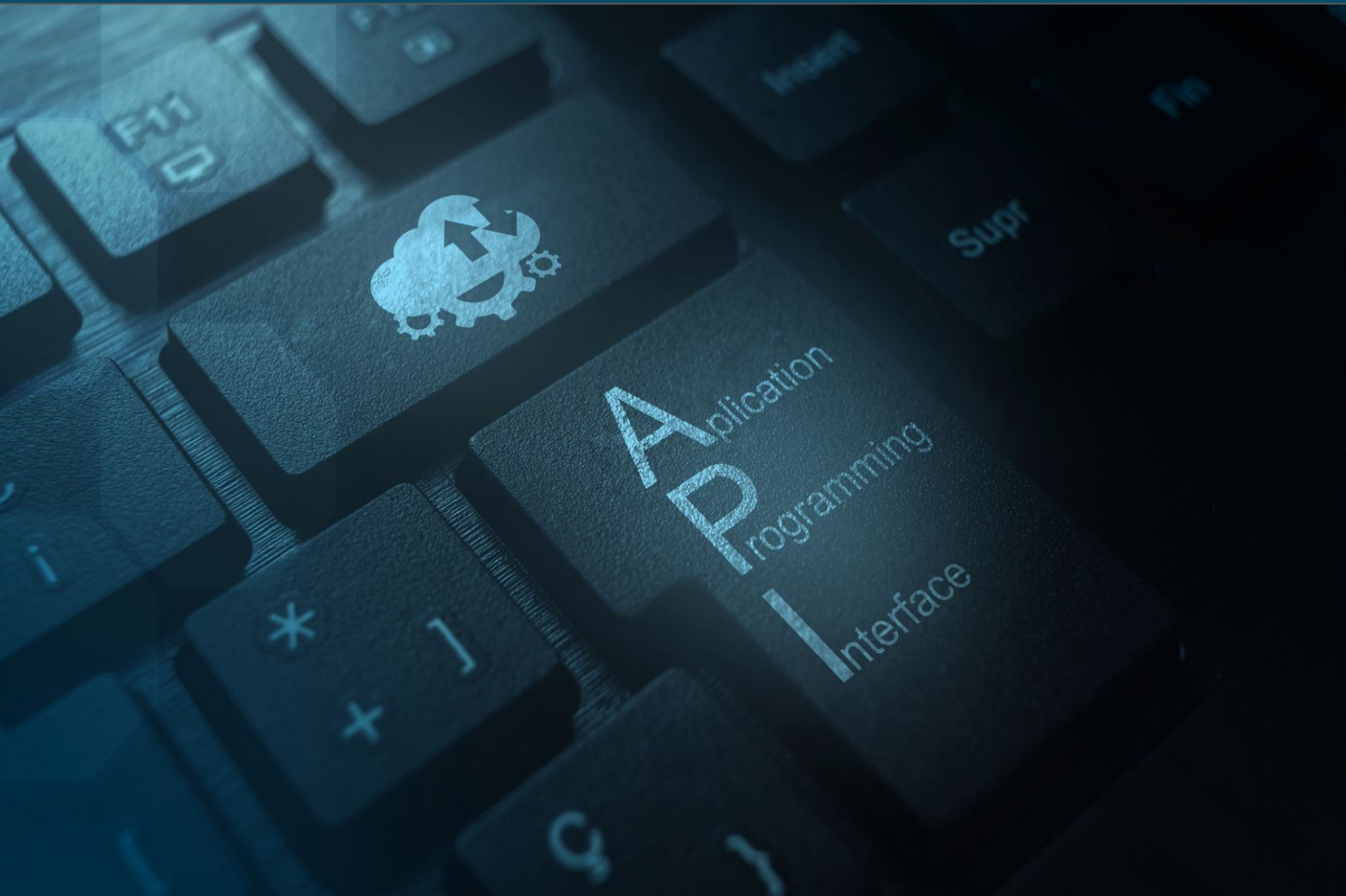


Open APISandbox

Create world class Developer experiences for your developers and empower your 3rd party ecosystems with rich, smart and transactional Open APISandbox



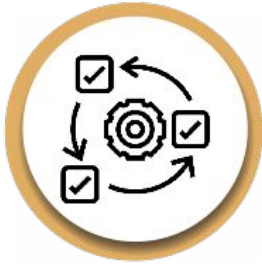


About the Platform

Accelerate innovation and increase collaboration between 3rd parties and Enterprises by offering production-level Sandbox environments to minimize complexities and increase API adoption.

Enterprises can now leverage low-cost Sandbox, enable 3rd party ecosystems (Fintech, Healthtech, Edtech, etc) to quickly adopt APIs and create ecosystem driven products efficiently using smart transaction sandbox.

**Robust
Portable & Scalable**



**Multi-tenant
Testing
Environment**

One **API**Sandbox

Rich, Smart & Transactional
Open API Sandbox



**Self-serving
Platform**



**Smart
Transactional
& Data driven**



**Craft Great
Developer Experience**

Open APISandbox Key Features



A powerful Sandbox to Mitigate Open API Complexities and deliver innovative products Faster



Smart, Transactional & Data driven

Leverage a fully transactional Open APISandbox with smart analytics and reports engine. Easily simulate, manage and customize errors at business level. Enterprises can make the most of try out sequencing, advance data logics and performance simulation to achieve product perfection and includes a fully integrated business rules manager to meet business requirements.



Robust, Portable & Scalable

Open APISandbox platform leverages cutting-edge technology to offer the highest range of portability for enterprises to either deploy your Sandbox locally or on any cloud. Offers the flexibility and robustness to spin up new sandboxes on demand so test multiple versions of APIs at the same time. Sandbox platform will be built to support multiple API Gateway and helps easily scale the number of sandboxes needed.



Craft Great Developer Experience

Offer the best experience to your API ecosystem starting from replicating the actual production environment. The smart sandbox enables enterprises to send back curated or canned responses for each API, transactional responses like payments and dynamic responses with business rules applied on responses.



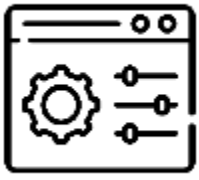
Multi-tenant Testing Environment

Set up isolated environments or manage multiple environments for all functions, stakeholders and developers to innovate faster. Hosts an intelligent versioning and environment management feature with extensive consent management module to help cater to all your access related scenarios. Scaling up multiple environments is just a few clicks away.



Self-serving Platform

Set up isolated environments or manage multiple environments for all functions, stakeholders and developers to innovate faster. Hosts an intelligent versioning and environment management feature with extensive consent management module to help cater to all your access related scenarios. Scaling up multiple environments is just a few clicks away.



Surface Control

These all the parameters/ properties presence in the input, their format and value checks



Simulate high level security

These are controls to ensure that consumer has the right access and controls based on access token information (consumer, scopes, end user, roles) and business data



Business rules

These are core to any implementation to make sure that the API behaves as expected based on the business logic and data



Save, Protect & Restore Data

Being able to retrieve a previously created or modified task means that the corresponding data have been saved and hence the data can be created, modified or deleted



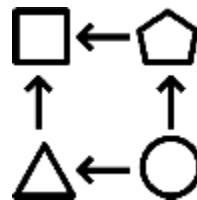
Data Isolation

Ensuring that there is a logical separation of data for two different users/orgs using the sandbox



Simulate high level security

Ensure high level security that is usually handled by an API gateway and an identity provider which decides who can access which API (even which operation inside an API), obtaining an access token to make API calls with or without end user authentication, and control those access tokens



Simulate non API visible dependencies

Depending on the kind of service provided, consumers may interact with the system exposing it in other ways than calling the API



Downloadable sandbox

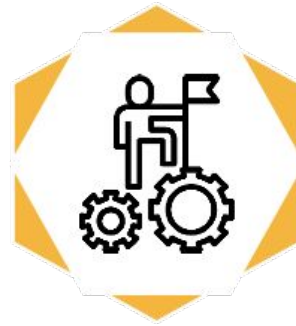
Being able to retrieve a previously created or modified task means that the corresponding data have been saved and hence the data can be created, modified or deleted

Developer Onboarding Workflows Available



Business Automated Self Service for Developers/Companies

In this mode, the Individual developers or the ones belonging to a company can go and register themselves on the portal, get an account created and then register apps. This is used when the API portal has the APIs which are available to third party developers /companies



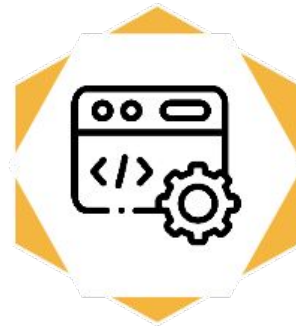
Self Service for Developers/ Companies With Manual Approval

In this mode, the registration link is available publicly on the portal. However, when a individual or a company developer registers, admins get notified and they may ask for more information from the person filing the registration form. Based on that, admins can approve/reject the request.



Invitation Only onboarding for companies/developers

As per this model, Admins can send the link to certain partner (internal or external) inviting them to register. Once a person registers, he/she can invite the team members to be part of the same group and then subscribe the the APIs relevant to the project.



Dynamic Client Registration

DCR is a regulatory compliance way of on-boarding 3rd party aggregators or TPPs (Third Party providers) allows to register themselves dynamically through certificate generation from 3rd Open Banking and authority and uploading TPPs certificates. This involves Mutual TLS underneath and is the most complex way of on-boarding TPPs. This required for UK/EU market. Read more here. DAC's Open Banking sandbox is built with fully compliant DCR from Developer Portal



Open **API**Sandbox

Interested in One **API**Sandbox?

Email us at

Sales@digitalapicraft.com

About Digital**API**Craft

DigitalAPICraft, through its products and services, helps global brands establish their API Ecosystem and transform into a truly Experience Enterprise. As a leading end-to-end digital transformation partner, our API-led approach enables banking, healthcare, telecom, insurance & retail companies to offer delightful customer experience, transform business processes and boost operational efficiency.

DigitalAPICraft has been awarded “Delivery Partner of the Year for APAC 2017- Google Cloud” and is a premier Google - Apigee partner. Over three consecutive years (2020, 2019 & 2018), DigitalAPICraft is recognized as one of the fastest-growing technology companies by Deloitte in its Technology Fast 50 India and twice (2019 & 2018) in Technology Fast 500 Asia Pacific rankings.

Located in USA, UK, and India, and with customers across the globe, DigitalAPICraft brings extensive product and platform experience to help enterprises with digital strategy and consulting, disruption engineering, end-to-end DevOps, experience engineering, and much more.